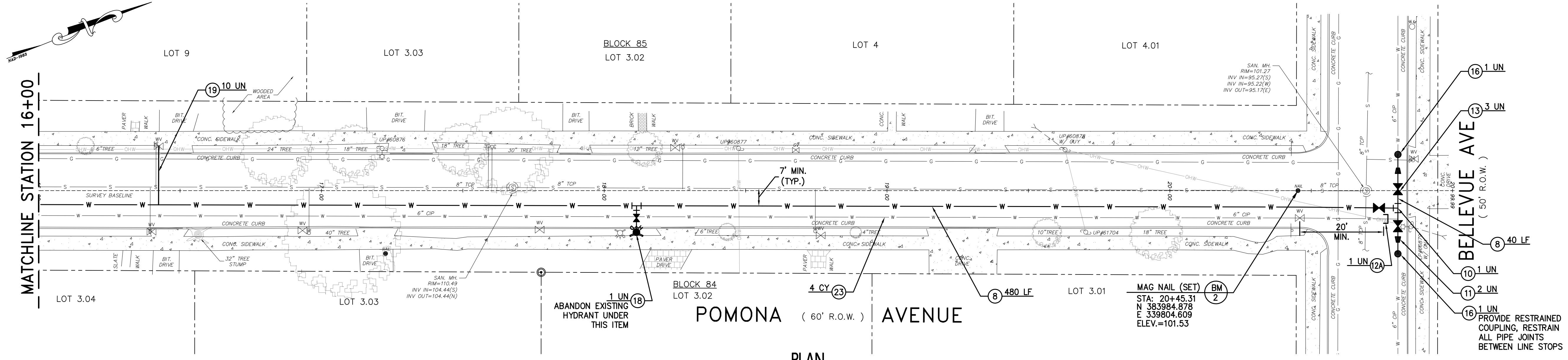


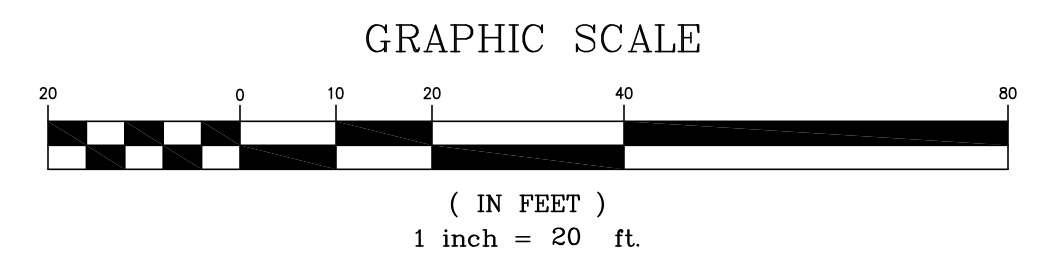
PLAN
SCALE: 1" = 20'



PLAN
SCALE: 1" = 20'

TO BE CONSTRUCTED			
#	DESCRIPTION	UNITS	PLAN QUANTITY
8	8" CLDIP CLASS 52 WATER MAIN, COMPLETE	LF	620
10	8"x8"x8" MJT RESTRAINED CLDIP TEE	UN	1
11	8" X 6" MJT RESTRAINED CLDIP REDUCER	UN	2
12A	6" MJT RESTRAINED END CAP	UN	1
13	8" MJT RESTRAINED RESILIENT SEAT GATE VALVE, COMPLETE	UN	2
16	6" LINE STOP, COMPLETE	UN	2
18	FIRE HYDRANT ASSEMBLY, COMPLETE	UN	1
19	1" WATER SERVICE, UP TO 40' LONG, COMPLETE	UN	14
23	FLOWABLE FILL MATERIAL, COMPLETE	CY	5

TO BE CONSTRUCTED			
#	DESCRIPTION	UNITS	PLAN QUANTITY
8	8" CLDIP CLASS 52 WATER MAIN, COMPLETE	LF	520
10	8"x8"x8" MJT RESTRAINED CLDIP TEE	UN	1
11	8" X 6" MJT RESTRAINED CLDIP REDUCER	UN	2
12A	6" MJT RESTRAINED END CAP	UN	1
13	8" MJT RESTRAINED RESILIENT SEAT GATE VALVE, COMPLETE	UN	3
16A	6" LINE STOP, COMPLETE	UN	2
18	FIRE HYDRANT ASSEMBLY, COMPLETE	UN	1
19	1" WATER SERVICE, UP TO 40' LONG, COMPLETE	UN	10
23	FLOWABLE FILL MATERIAL, COMPLETE	CY	4



ANY DOCUMENTS PREPARED BY REMINGTON & VERNICK ENGINEERS ARE INSTRUMENTS OF SERVICE IN RESPECT OF THE PROJECT. THEY ARE NOT INTENDED OR REPRESENTED TO BE SUITABLE FOR REUSE BY OWNER OR OTHERS ON EXTENSIONS OF THE PROJECT.

ANY REUSE WITHOUT WRITTEN VERIFICATION OR ADAPTATION BY REMINGTON & VERNICK ENGINEERS FOR THE SPECIFIC PURPOSE INTENDED WILL BE AT OWNERS SOLE RISK AND WITHOUT LIABILITY OR LEGAL EXPOSURE TO REMINGTON & VERNICK ENGINEERS, AND OWNER SHALL INDEMNIFY AND HOLD HARMLESS REMINGTON & VERNICK ENGINEERS FROM ALL CLAIMS, DAMAGES, LOSSES AND EXPENSES ARISING OUT OF.

PLANS WHICH DO NOT BEAR AN EMBOSSED SEAL ARE NOT VALID.

NO.	REVISION	DATE	BY	CHK.	BY
WATER UTILITY IMPROVEMENTS - POMONA AVE 2014 UTILITY PROGRAM - REPLACEMENT OF UTILITIES VARIOUS ROADS HADDONFIELD BOROUGH, CAMDEN COUNTY, NEW JERSEY					
DATE: 5/20/14 RICHARD B. CZEKANSKI NJ PROFESSIONAL ENGINEER LIC. NO. 33255			DATE: 5/20/14 DENNIS K. YODER NJ PROFESSIONAL ENGINEER LIC. NO. 31866		
REMINGTON & VERNICK ENGINEERS 232 KING'S HIGHWAY EAST HADDONFIELD, NJ 08033 (856) 795-9595, FAX (856) 795-1882, WEB SITE ADDRESS: WWW.RVE.COM Certificate of Authorization: 24 GA 28003800					
SCALE	DATE	DRAWN BY	DSGN. BY	CHK'D. BY	DWG. NO.
1"=20'	5/2014	J.J.M.	S.C.	D.K.Y.	0417-T-498
DWG FILE PATH					SHEET NO.
J:\Cadd Projects\NJ\Camden\Only\Haddonfield\Bor\04171498 - 2014 Utility Improv\04171498 - Pomona - Website.dwg					5 OF 13