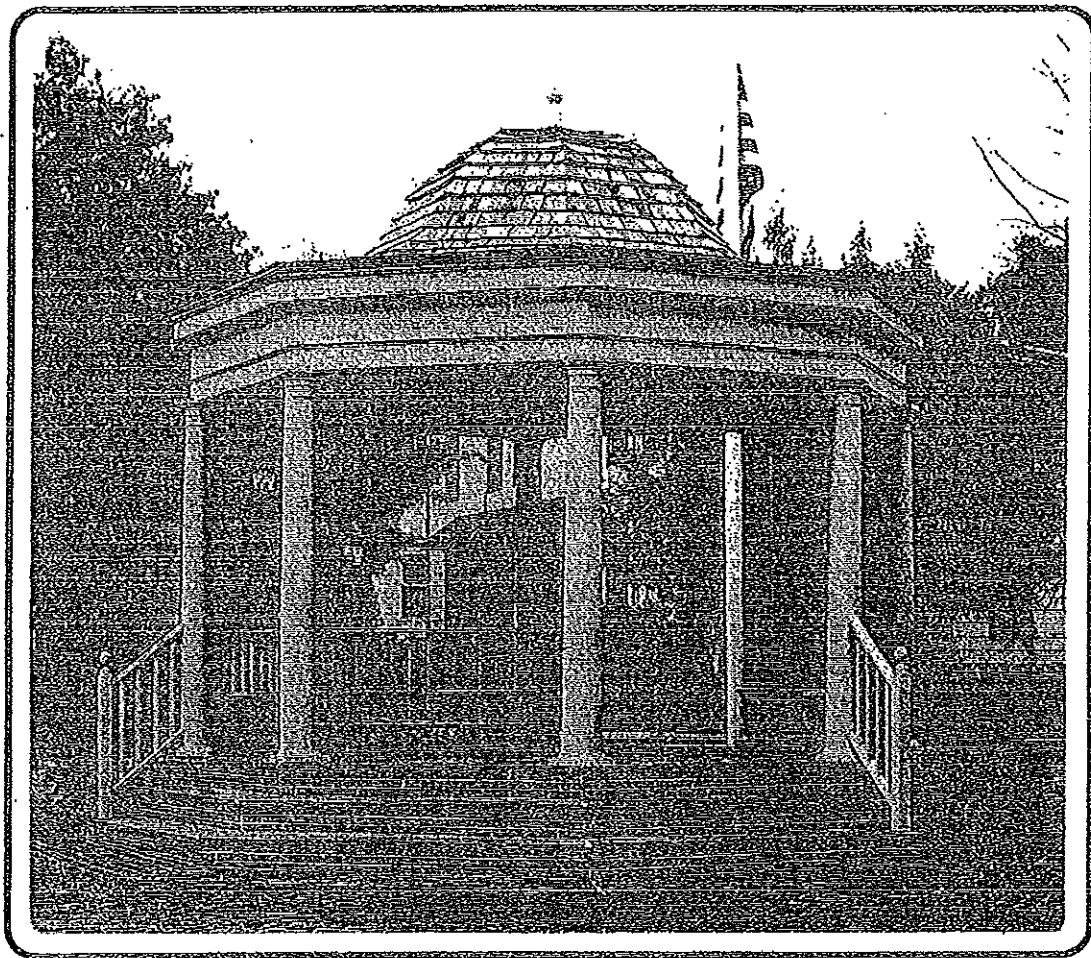


MASTER PLAN  
*of the*  
Borough of Haddonfield



*photo by Carlton Read*

BOROUGH PLANNING BOARD

1984

WITH AMENDMENTS THROUGH 2009

Transportation & Circulation; (2) Environment and Renewable Energy; (3) Zoning Regulation; (4) Historic Preservation; and (5) Stormwater Management. A brief analysis of problems and goals follows.

### **1. Transportation & Circulation**

- \* Haddonfield is an eminently walkable community. The Board and Borough Commissioners should continue to review ways to enhance this desirable characteristic, such as by eliminating sidewalk gaps, especially on school routes, and by encouraging more use of bicycles through designated bike routes and paths and through the provision of bike racks in the downtown area.

It has also been suggested that the Borough consider creating a pocket park on Tanner Street, to encourage pedestrian access between the High Speed Line and the Downtown District.

There may be a need for traffic calming measures to control motor vehicle speed on roads in addition to Maple Avenue and Lincoln Avenue. The Borough should consider implementation of the recommendations in the 2004 NJDOT Traffic Calming Study. Further study is required on creating additional barrier free intersections.

Additionally, an educational initiative is recommended, particularly aimed at school age children, to improve their understanding of pedestrian and vehicle right-of-way rules and safety precautions, including the use of helmets while bicycling.

Finally, the ongoing problem of traffic congestion near the Borough's schools remains a concern. Those high congestion times (the beginning and ending of the school day, and at lunchtime) need the attention of the Borough and its applicable committees (e.g., TAPS), in concert with the School Board, in order to identify solutions to the inherent problems and dangers presented at our schools.

### **2. Environment & Renewable Energy**

In addition to recommending preparation of a green buildings and environmental sustainability element, the Board fully supports the implementation of the Greenways Project and Hadrosaurus Interpretative Trail described in detail in the Open Space and Recreation plan element as adopted in 2005 and amended in 2008. Funding should continue to be sought to bring these projects to fruition.

The Planning Board needs to further study the recommendation of the Haddonfield Shade Tree Commission that the Community Forestry Management Plan guide the Commission's management of the Borough's tree resources.