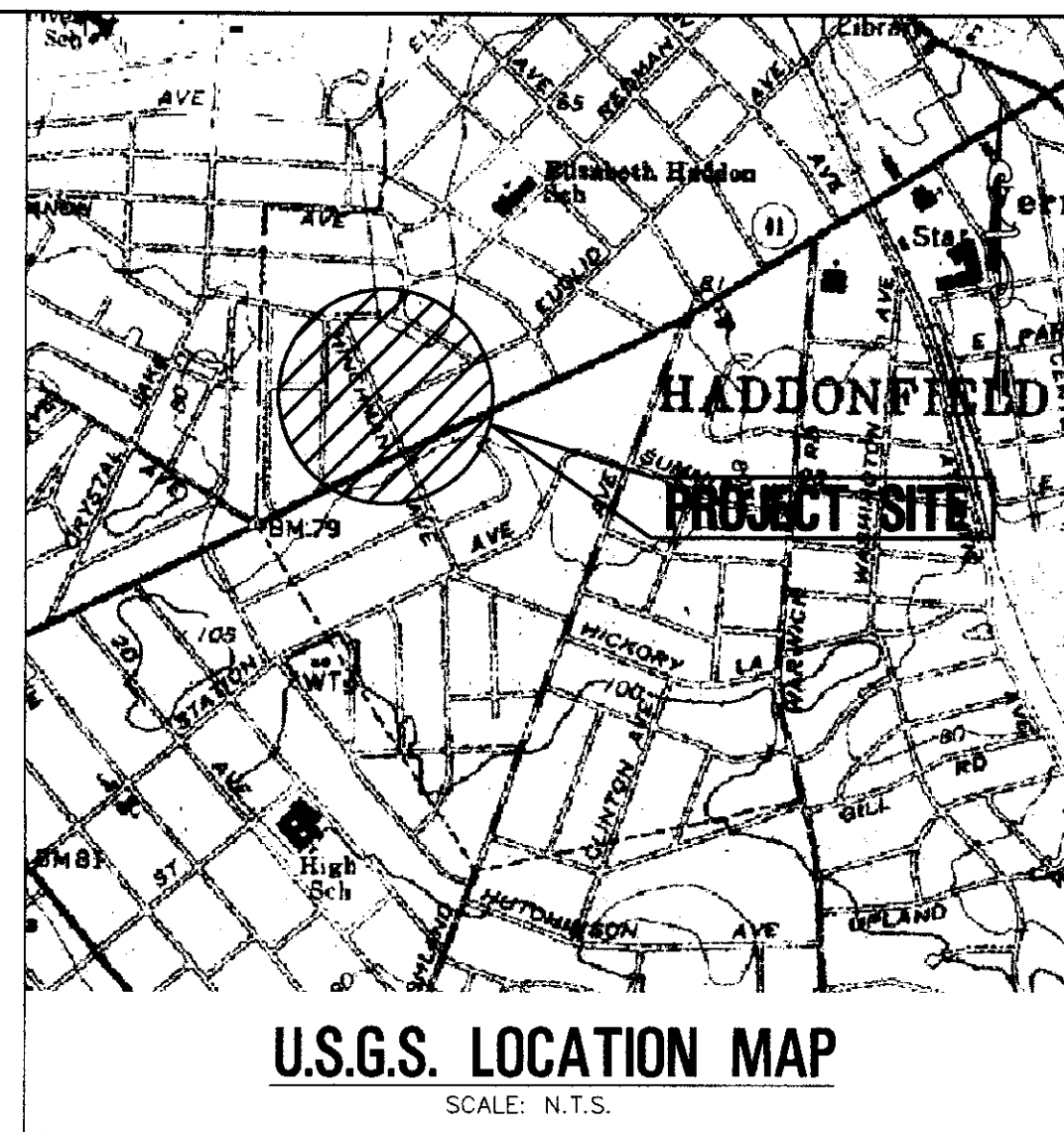


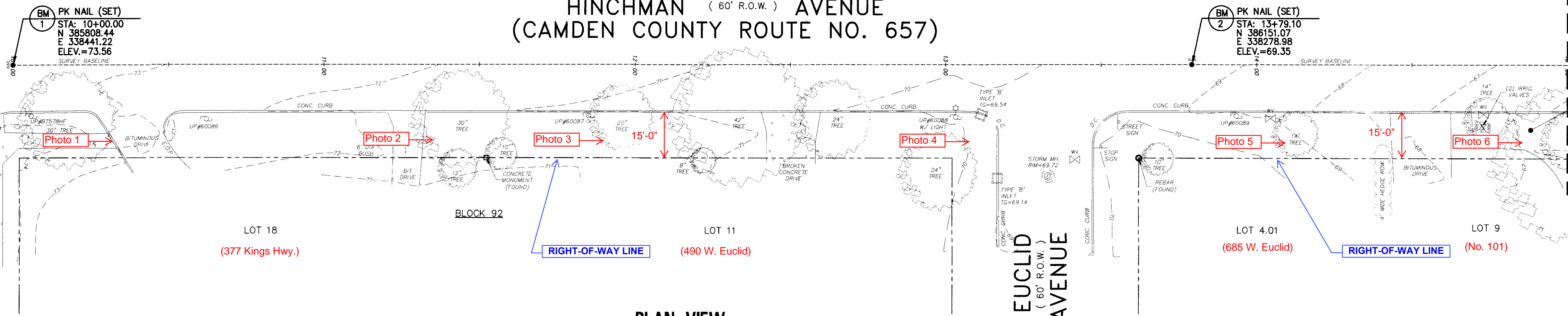
WEST KINGS HIGHWAY  
(COUNTY ROUTE  
NO. 551 SPUR)  
(66' R.O.W.)

MATCHLINE STATION 15+00

HINCHMAN (60' R.O.W.) AVENUE  
(CAMDEN COUNTY ROUTE NO. 657)



U.S.G.S. LOCATION MAP  
SCALE: N.T.S.



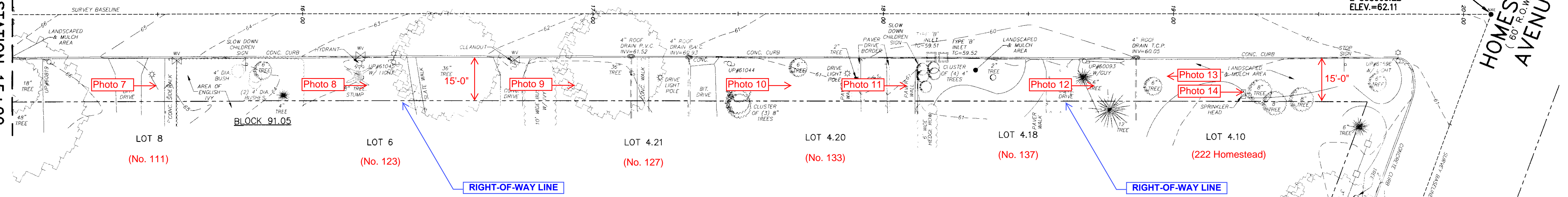
PLAN VIEW  
SCALE: 1" = 20'

LEGEND

- = GUY WIRE
- = UTILITY POLE
- = EXISTING WATER VALVE BOX
- = EXISTING FIRE HYDRANT
- = EXISTING SIGN
- = BUSH
- = TREE
- = MAG NAIL (SET)
- = MAILBOX
- = WOODS LINE
- = LIGHT POST
- = ELECTRICAL BOX
- = SANITARY MANHOLE
- = STORM MANHOLE
- = STORM INLET
- = CHAIN LINK FENCE
- = SANITARY SEWER
- = STORM SEWER
- = 1' FOOT CONTOUR
- = GROUND ELEVATION
- = BOLLARD
- = GAS METER

MATCHLINE STATION 15+00

HINCHMAN (60' R.O.W.) AVENUE  
(CAMDEN COUNTY ROUTE NO. 657)

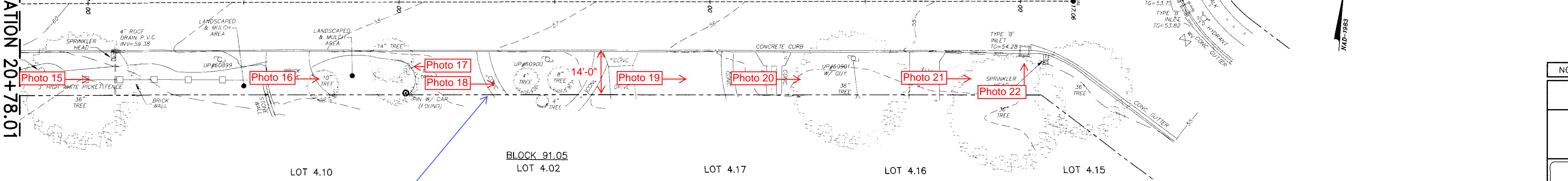


PLAN VIEW  
SCALE: 1" = 20'

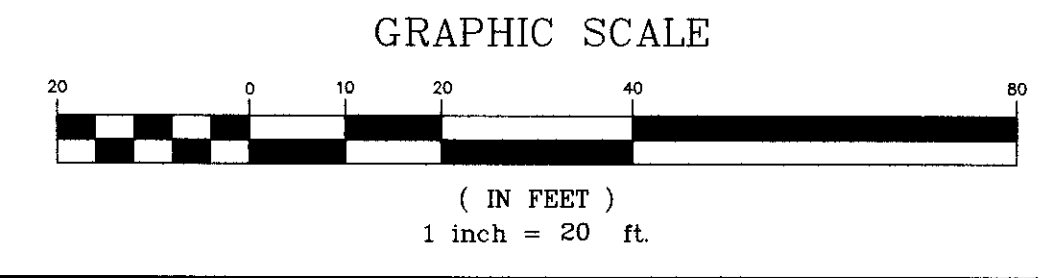
MATCHLINE STATION 20+78.01

MATCHLINE STATION 20+78.01

HOMESTEAD (60' R.O.W.) AVENUE



PLAN VIEW  
SCALE: 1" = 20'



SURVEY NOTES & REFERENCES:

1. THE HORIZONTAL DATUM IS BASED ON NAD-1983 (GRID COORDINATES) AND THE VERTICAL DATUM IS BASED ON NAVD-1988.(ADD 1.14' TO THESE ELEVATIONS TO CONVERT TO NGVD-1929 DATUM)
2. PROPERTY AND RIGHT-OF-WAY LINES SHOWN ON THESE PLANS WERE BASED ON THE CURRENT TAX MAPS OF THE BOROUGH OF HADDONFIELD, CAMDEN COUNTY, NEW JERSEY.
3. EXISTING TOPOGRAPHIC CONDITIONS WERE SURVEYED BY REMINGTON & VERNICK ENGINEERS UNDER THE SUPERVISION OF CHARLES E. ADAMSON, N.J.P.E.S. LICENSE NO. 42627. THE SURVEY WORK WAS COMPLETED ON NOVEMBER 5, 2013.

NO.	REVISION	DATE	BY	CHK. BY		
EXISTING CONDITIONS PLAN						
SIDEWALK INSTALLATION AT HINCHMAN AVENUE BOROUGH OF HADDONFIELD, CAMDEN COUNTY, NEW JERSEY						
DATE:						
<b>CHARLES E. ADAMSON</b> NJ PROFESSIONAL LAND SURVEYOR LIC. NO. 42627						
<b>REMINGTON &amp; VERNICK ENGINEERS</b> 232 KING'S HIGHWAY EAST HADDONFIELD, NJ 08033 (856) 795-9595, FAX (856) 795-1882, WEB SITE ADDRESS: WWW.RVE.COM Certificate of Authorization: 24 GA 28003800						
SCALE	DATE	DRAWN BY	DSGN. BY	CHK'D. BY	DWG. NO.	SHEET. NO.
1"=20'	11/8/2013	J.S.	-	C.E.A.	0417T	1 OF 1
DWG FILE PATH/NAME						
T:\survey\PROJECTS\CAMDEN CNTY\HADDONFIELD\0417T - HINCHMAN AVE 1113\DWG\0417T-HN 1013.dwg						