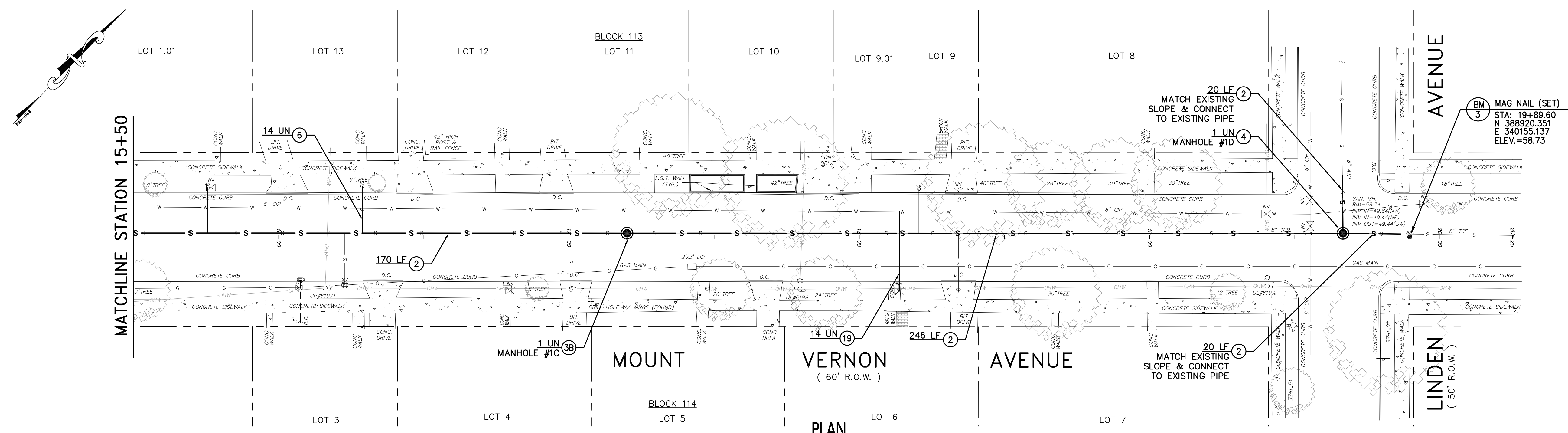


PLAN  
SCALE: 1" = 20'

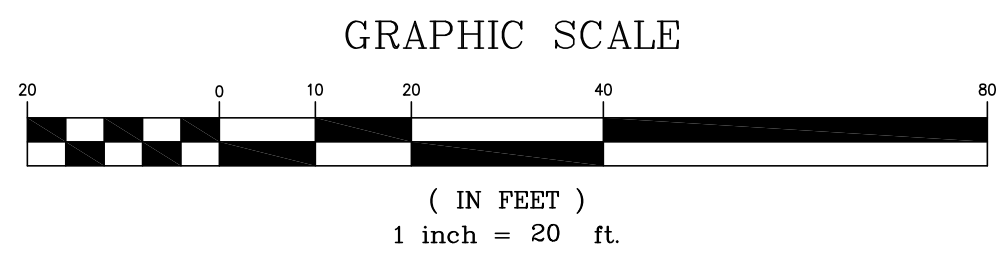


PLAN  
SCALE: 1" = 20'

TO BE CONSTRUCTED			
#	DESCRIPTION	UNITS	PLAN QUANTITY
2	REMOVE EXISTING SANITARY SEWER MAIN AND PROVIDE NEW 8" PVC SDR 35 SEWER PIPE, COMPLETE	LF	618
3	PROVIDE CONNECTION OF NEW PIPE TO EXISTING MANHOLE	UN	1
3B	PROVIDE NEW SANITARY MANHOLE, 0-12" DEEP, COMPLETE, 4' DIAMETER	UN	1
5	REMOVE EXISTING SANITARY MANHOLE AND PROVIDE NEW SANITARY INTERIOR DROP	UN	1
6	REMOVE EXISTING SANITARY LATERAL AND PROVIDE NEW 4" SANITARY LATERAL CONNECTION, DEEP CUT, WITH CLEANOUT AND CASTING, UP TO 30' IN LENGTH, COMPLETE	UN	15
18	FIRE HYDRANT ASSEMBLY, COMPLETE	UN	1
19	1" WATER SERVICE, UP TO 40' LONG, COMPLETE	UN	15
29	CLEAN & TELEVIEW 8" SANITARY MAIN, PRE & POST INSTALLATION, COMPLETE	LF	1236

TO BE CONSTRUCTED			
#	DESCRIPTION	UNITS	PLAN QUANTITY
2	REMOVE EXISTING SANITARY SEWER MAIN AND PROVIDE NEW 8" PVC SDR 35 SEWER PIPE, COMPLETE	LF	451
3B	PROVIDE NEW SANITARY MANHOLE, 0-12" DEEP, COMPLETE, 4' DIAMETER	UN	1
4	REMOVE EXISTING SANITARY MANHOLE AND PROVIDE NEW SANITARY MANHOLE, 0-12" DEEP, COMPLETE, 4' DIAMETER	UN	1
6	REMOVE EXISTING SANITARY LATERAL AND PROVIDE NEW 4" SANITARY LATERAL CONNECTION, DEEP CUT, WITH CLEANOUT AND CASTING, UP TO 30' IN LENGTH, COMPLETE	UN	14
19	1" WATER SERVICE, UP TO 40' LONG, COMPLETE	UN	14
29	CLEAN & TELEVIEW 8" SANITARY MAIN, PRE & POST INSTALLATION, COMPLETE	LF	912



NO.	REVISION	DATE	BY	CHK.	BY
SANITARY SEWER UTILITY IMPROVEMENTS - MOUNT VERNON AVE					
2014 UTILITY PROGRAM -					
REPLACEMENT OF UTILITIES VARIOUS ROADS					
HADDONFIELD BOROUGH, CAMDEN COUNTY, NEW JERSEY					
DATE: 5/20/14			DATE: 5/20/14		
RICHARD B. CZEKANSKI NJ PROFESSIONAL ENGINEER LIC. NO. 33255			DENNIS K. YODER NJ PROFESSIONAL ENGINEER LIC. NO. 31866		
REMINGTON & VERNICK ENGINEERS 232 KING'S HIGHWAY EAST HADDONFIELD, NJ 08033 (856) 795-9595, FAX (856) 795-1882, WEB SITE ADDRESS: WWW.RVE.COM Certificate of Authorization: 24 GA 28003800					
SCALE	DATE	DRAWN BY	DSGN. BY	CHK'D. BY	DWG. NO.
1"=20'	5/20/14	J.J.M.	S.C.	D.K.Y.	0417-498
SHEET NO. 3 OF 13			DWG. NO. 0417-498		
DWG FILE PATH J:\Cadd Projects\NJ\Camden Cnty\Haddonfield Bor\0417498 - 2014 Utility Improv\0417498 - MTV - Website.dwg					

ALL DOCUMENTS PREPARED BY REMINGTON & VERNICK ENGINEERS ARE INSTRUMENTS OF SERVICE IN RESPECT OF THE PROJECT. THEY ARE NOT INTENDED OR REPRESENTED TO BE SUITABLE FOR REUSE BY OWNER OR OTHERS ON EXTENSIONS OF THE PROJECT

ANY REUSE WITHOUT WRITTEN VERIFICATION OR ADAPTATION BY REMINGTON & VERNICK ENGINEERS FOR THE SPECIFIC PURPOSE INTENDED WILL BE AT OWNERS SOLE RISK AND WITHOUT LIABILITY OR LEGAL EXPOSURE TO REMINGTON & VERNICK ENGINEERS; AND OWNER SHALL INDEMNIFY AND HOLD HARMLESS REMINGTON & VERNICK ENGINEERS FROM ALL CLAIMS, DAMAGES, LOSSES AND EXPENSES ARISING OUT OF

PLANS WHICH DO NOT BEAR AN EMBOSSED SEAL ARE NOT VALID.