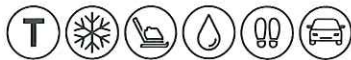
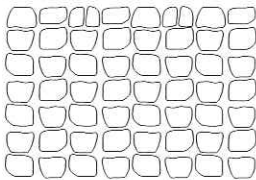




ANTIKA

DESCRIPTION: Paver TEXTURE: Smooth

PALLET OVERVIEW*



The Antika paver is perfect as a filler in a circle, around a fan design or on a winding pathway. Antika can also be used as a mosaic frame around any design.

NOTES

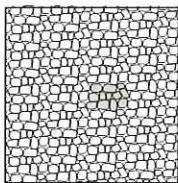
See page 60 to 62 for more technical information. When used in a permeable pavement application, see page 99 to 104 for more technical information.

See page 29 for more information about applications.

JOINT WIDTH: VARIABLE
% OF SURFACE OPENING: VARIABLE
INFILTRATION RATE: 993 in./hr
 (25 227 mm/hr)

*Pallet layout may vary.

01 | Random pattern



Patterns are for design inspiration only. The installer is responsible to calculate & purchase the correct amount of material.

Specifications per pallet	Imperial	Metric
Cubing	87 ft ²	8.10 m ²
Approx. Weight	2 183 lbs	990 kg
Number of rows	9	
Coverage per row	9.67 ft ²	0.90 m ²

	Unit dimensions	in	mm
A	Height	2 3/8	60
	Width	Variable	
	Length	Variable	
B	Height	2 3/8	60
	Width	Variable	
	Length	Variable	
C	Height	2 3/8	60
	Width	Variable	
	Length	Variable	
D	Height	2 3/8	60
	Width	Variable	
	Length	Variable	
E	Height	2 3/8	60
	Width	Variable	
	Length	Variable	
F	Height	2 3/8	60
	Width	Variable	
	Length	Variable	
G	Height	2 3/8	60
	Depth	Variable	
	Length	Variable	

Chocolate Brown Chestnut Brown Sandalwood Shale Grey Onyx Black

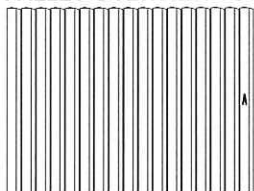




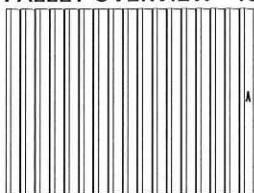
BOREALIS

DESCRIPTION: Slab **TEXTURE:** Klean-Bloc Wood (available Spring 2021)
HD² Wood (while quantities last)

PALLET OVERVIEW - 5x30



PALLET OVERVIEW - 10x30



Klean-Bloc technology will be available Spring 2021. See page 22.

HD² Product is available in HD² while quantities last.

NOTES

Palletized upright.

*For an authentic look, each color option is composed of a variety of darker & lighter tones. Natural ingredients such as granite are present within the recipe to allow for a range in tones, veining and textures from one stone to another.

In order to obtain a more realistic appearance to natural stone, wet cast (Stonedge collection) slabs are intended to have a slightly larger variance in their dimensions than dry cast slabs. See Notes for dimensional tolerances on page 31.

See page 31 to 33 for more technical information.

See page 28 for more information about applications.

IMPORTANT: When installing Borealis 5x30 or Borealis 10x30, it is recommended to have a gap between $\frac{1}{16}$ and $\frac{3}{16}$ in. (2 and 5 mm), between the units, to allow the sand to enter between each unit.

Specifications per pallet		Imperial	Metric
5" x 30"	Cubing	68 units	68 units
		70.83 ft ²	6.58 m ²
	Units	1.04 ft ²	0.10 m ²
	Approx. Weight	1 784 lbs	809 kg
	Number of rows	4	
	Coverage per row	17.71 ft ²	1.65 m ²
Linear coverage per row	Depth	7.08 lin. ft	2.16 lin. m
	Length	42.5 lin. ft	12.96 lin. m

Unit dimensions	in	mm	Units/pallet
Height	2 ¼	57	68 units
Width	5	127	
Length	30	762	

Specifications per pallet		Imperial	Metric
10" x 30"	Cubing	34 units	34 units
		70.83 ft ²	6.58 m ²
	Approx. Weight	1 881 lbs	853 kg
	Units	2.08 ft ²	0.19 m ²
	Number of rows	2	
	Coverage per row	35.42 ft ²	3.29 m ²
Linear coverage per row	Depth	42.5 lin. ft	12.95 lin. m
	Length	14.2 lin. ft	4.33 lin. m

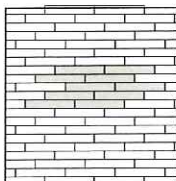
Unit dimensions	in	mm	Units/pallet
Height	2 ¼	57	34 units
Width	10	254	
Length	30	762	

Smoked Pine Hazelnut Brandy Riviera



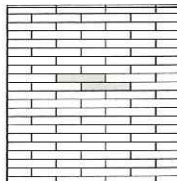
01 | Linear pattern

100% - 5x30



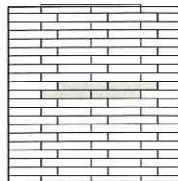
02 | Linear pattern

100% - 5x30



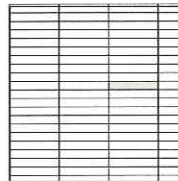
03 | Linear pattern

100% - 5x30



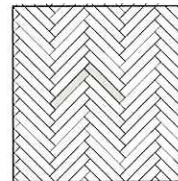
04 | Linear pattern

100% - 5x30



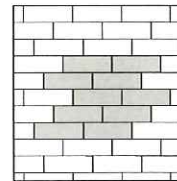
05 | Herringbone pattern

100% - 5x30



06 | Linear pattern

100% - 10x30



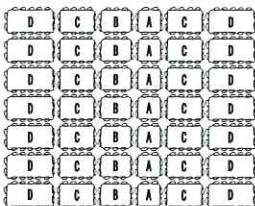
Patterns are for design inspiration only. The installer is responsible to calculate & purchase the correct amount of material.



VILLAGIO

DESCRIPTION: Paver TEXTURE: Beveled

PALLET OVERVIEW



The Villagio paver allows for gentle curves and winding pathways, eliminating the need for cuts.

NOTES

See page 60 to 62 for more technical information. When used in a permeable pavement application, see page 99 to 104 for more technical information.

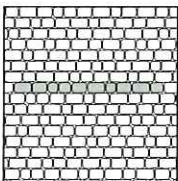
See page 29 for more information about applications.

JOINT WIDTH: 3/8" TO 9/16" (9 TO 15 mm)
% OF SURFACE OPENING: 8.0 %
INFILTRATION RATE: 896 in./hr
 (22 750 mm/hr)

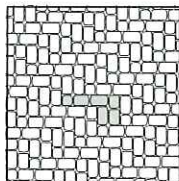
Specifications per pallet	Imperial	Metric
Cubing	117 ft ²	10.88 m ²
Approx. Weight	3 029 lbs	1 374 kg
Number of rows	11	
Coverage per row	10.64 ft ²	0.99 m ²
Linear coverage per row	24.94 lin. ft	7.61 lin. m

Unit dimensions	in	mm	Units/pallet
 A	Height 2 3/8	60	77 units
	Width 5 1/8	130	
	Length 5 1/8	130	
 B	Height 2 3/8	60	77 units
	Width 5 1/8	130	
	Length 6 5/16	160	
 C	Height 2 3/8	60	154 units
	Width 5 1/8	130	
	Length 7 5/16	185	
 D	Height 2 3/8	60	154 units
	Width 5 1/8	130	
	Length 8 7/16	215	

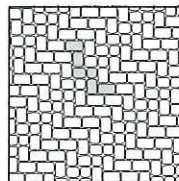
01 | Linear pattern



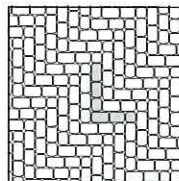
02 | Herringbone pattern



03 | Herringbone pattern



04 | Herringbone pattern



Patterns are for design inspiration only. The installer is responsible to calculate & purchase the correct amount of material.





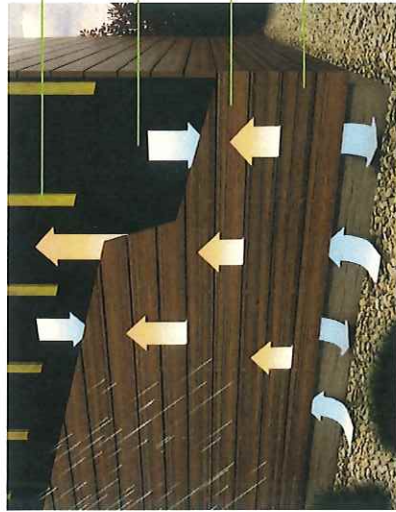
Trex® Cladding™

RAINSCREENS THAT MAKE WOOD OBSOLETE



FINISH RAINSCREEN SYSTEMS WITH TREX®

Trex Transcend® deck boards provide a worry-free armor for rainscreen assemblies. Our open-joint application offers the protection and aesthetic commercial and residential projects deserve.



Furring strips
(pressure-treated wood or 18 ga. steel)

UV-stable, vapor-permeable WRB
(water-resistant barrier) membrane

Trex open-joint rainscreen cladding

Multiple approved surface-fastener options

KEY BENEFITS OF TREX® CLADDING™



LOW MAINTENANCE

- Minimal upkeep means lower life-cycle costs
- No sanding or sealing required
- Less hassle; cleans easily



PREMIUM DURABILITY

- Tested to withstand hurricane-force winds, sun, sleet & snow
- Won't rot, fade or stain
- Insect-proof



ECO-FRIENDLY

- No trees have been cut down in its manufacturing
- Process includes recycling more than 800M pounds of discarded plastic film and reclaimed wood fiber annually
- Earns LEED points



RELIABLE

- Count on the same board color over the life of the product
- Backed by 25-year product and fade & stain warranties for both residential and commercial applications

TREX TRANSCEND

Board dimensions:

.94 in x 5.5 in
(24 mm x 140 mm)

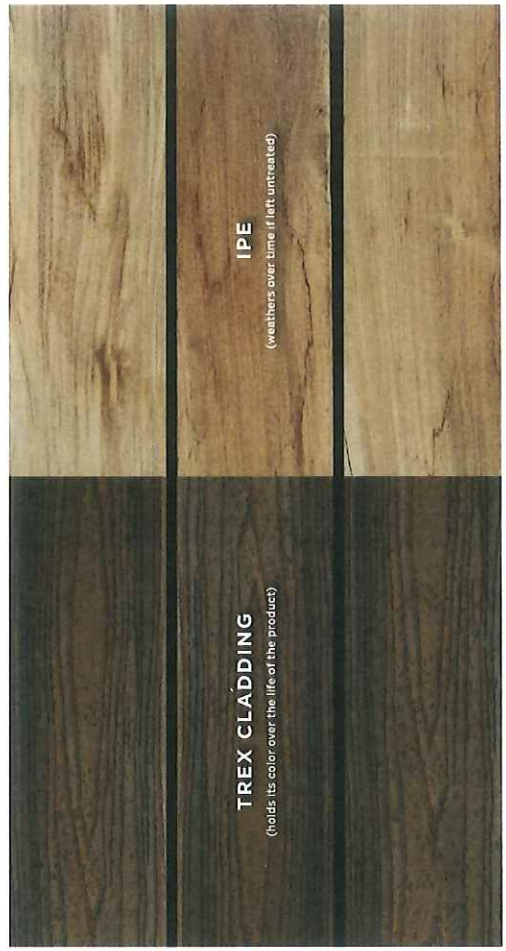
Available in 3 premium lengths:

12 ft, 16 ft and 20 ft
(365 cm / 487 cm / 609 cm)



Core:
95% recycled materials

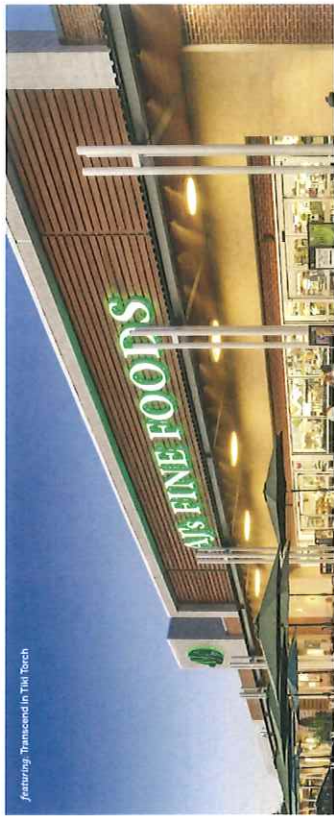
Shell:
Impact-, scratch- and fade-resistant



Featuring Transcend in Tiki Torch



Featuring Transcend in Tiki Torch

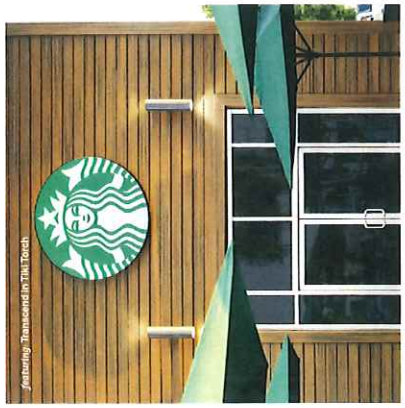


THE PERFECT COMBINATION OF AESTHETICS & PERFORMANCE— YEAR AFTER YEAR

Featuring Transcend in Tiki Torch



Featuring Transcend in Tiki Torch



Featuring Transcend in Island Mart



Featuring Transcend in Tiki Torch



Featuring Transcend in SpaceBurn



AVAILABLE IN 8 MONOCHROMATIC & MULTI-TONAL COLORS

Gravel Path

Island Mist

Rope Swing

Tiki Torch

Havana Gold

Spiced Rum

Vintage Lantern

Lava Rock



DESIGN VERSATILITY

- 8 colors offered in earth tone and tropical palettes
- Mix and match for a one-of-a-kind build
- Apply vertically or horizontally



UNPARALLELED PERFORMANCE

- Code compliant for Type V-B structures under 40' in height
- On Building Design + Construction's 2020 List of "Top 75 Products"



EASY INSTALLATION

- Apply to either a ventilated rainscreen or open-joint facade system
- Use conventional tools and methods
- Approved for 24" on-center furring strip spacing
- Available nationally in three premium board lengths



FASTENERS THAT SUIT THE IDEAL LOOK



Cap-Tor® xd screws with optional Pro Plug® System

Color-matched composite or with matching composite plug



DeckFast® Fascia screws

Color-coordinated, uncoated stainless steel or color-contrasting



Cap-Tor® xd and DeckFast® Metal composite screws are manufactured and sold by Starborn Industries, Inc.

featuring: Transcend in Island Mist



Engineering What's Next
in Outdoor Living*

DECKING | RAILING | LIGHTING | FASCIA
KITCHENS | FURNITURE | PERGOLA | DRAINAGE

Visit [trex.com](https://www.trex.com)
or call 1-800-BUY-TREX

FIND US ON



© 2021 Trex Company, Inc. All rights reserved.
Trex®, the Trex logo, Trex Transcend®, and
Trex® Cladding™ are either federally registered
trademarks, trademarks or trade dress of Trex
Company, Inc., Winchester, Virginia or its licensees.

0321 XCLTCLAD2021





THINBRICK
COLLECTION


Glen-Gery



The Craft of Thin Brick 4

Thin Brick 12

- Woodsmoked Series
- Craftsman Series
- Emporium Series
- La Paloma Series
- Designer Klaycoat® Series
- Burlesque Glazed Series
- Elements Series
- Linen Series
- Black Hills Series
- Couture Series
- Settler Series
- Colonial Series
- Cushwa® Calvert® Series

Installation Methods 20

Mortar & Shapes 24

Picture Perfect, Virtual Design Tool 26



Meet thin brick.

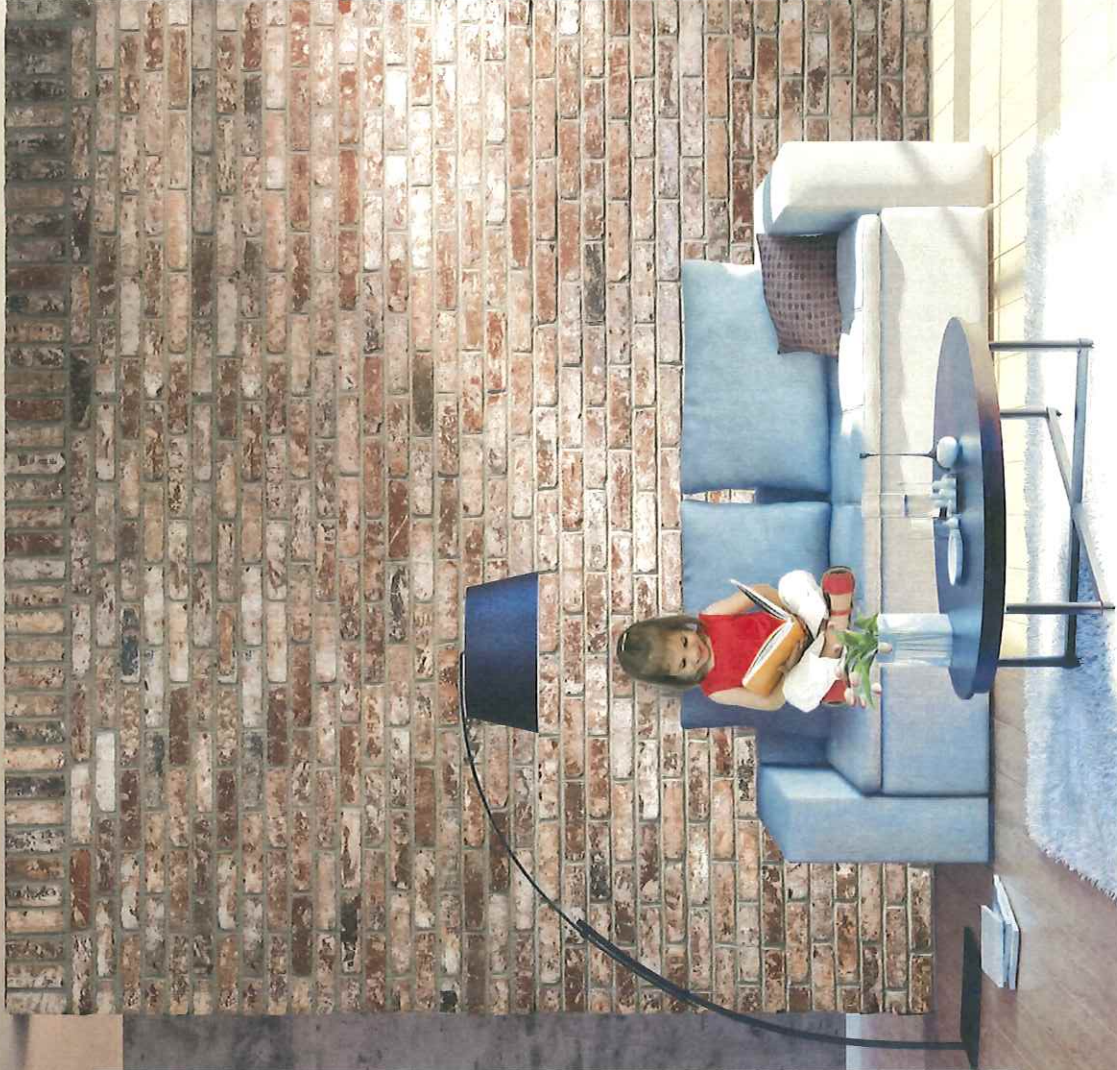
Glen-Gery thin brick is a compelling alternative developed to give architects, engineers, builders and homeowners a choice that expands their design potential.

Less is more.



The logical solutions

- Add stylish appeal of brick during any stage in a building's life cycle
- Reduced wall costs by eliminating shear angles, lintels and other support elements that are required for full-size brick
- Easy installation options that do not require a skilled laborer
- Great for many interior applications including ceilings and kitchen backsplashes



Older City Thin Brick

It's time to create.

LET'S GET STARTED.



Imaginative and spirited.

Thin brick designs range from the bold and striking to the subtly elegant. The Milwaukee thin brick featured here only begin to suggest the possibilities.



Milwaukee
Couture Series



Cedar Lake® Thin Brick



Essex Thin Brick

At the heart of it all.

AN INTELLIGENT ALTERNATIVE.

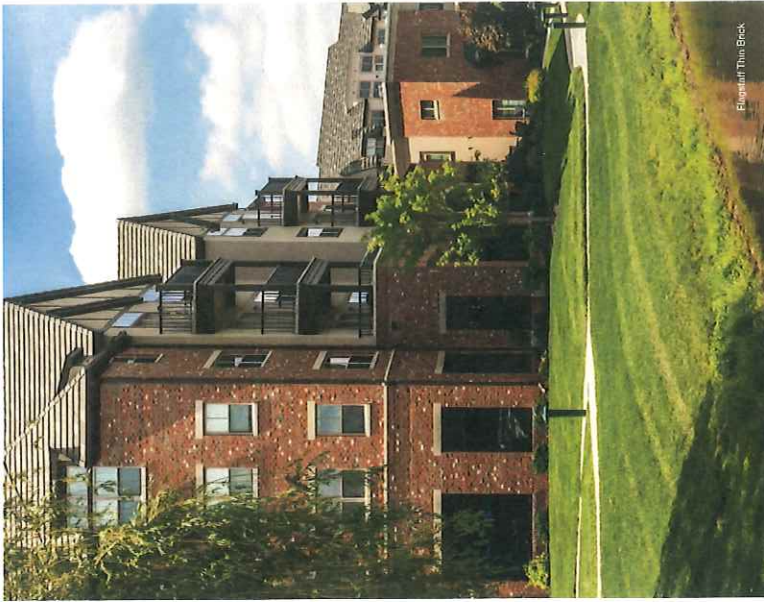
Thin Brick | Application

A true original.

As these Nob Hill thin brick rooms show, the unique style and refinement of Glen-Gary thin brick enriches many interior designs.

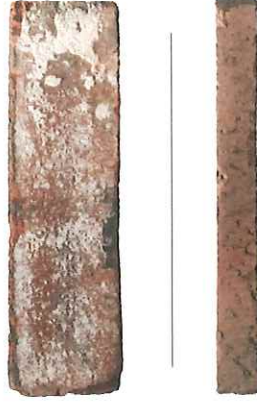


Nob Hill
Element Series



Product Overview

Glen-Gery thin brick is the pinnacle of form and function. With a striking appearance, its style is just as convincing as its strength. Whether you take it inside or outside, this brick has the pull to be the centerpiece.



Details

Suggested use: interior and exterior applications including accent walls, kitchens, bar surrounds, archways, fireplaces and more! Available in more than 100 color variations.

See the next few pages for color options, or visit www.glen-gery.com.

Specs

Thin brick comes in various sizes and thicknesses based on the product type selected. Please visit glen-gery.com for specific details.

Trending Colors



Thin Brick

PRODUCT OFFERING

Woodsmoked Thin Brick Series

Instantly, imitable and impossible to duplicate, the handmade Woodsmoked range is one of the most beautiful ways to reveal your individual style. No two handmade brick look the same, and that is exactly why they remain one of the most premium and sought after brick products available.

Catalog size: Handmade Oversize Thin Brick

[York]



Lorraine White



Smokey Mountain



Woodsmoked
(white mortar)



Woodsmoked
(black mortar)

Craftsman Thin Brick Series

Time tested, craft perfected. Subtly contoured and highly dependable, there is no substitute appeal of genuine Handmade Brick. Homeowners love the look and builders love the dependability and conformity to architectural specifications.

Catalog size: Handmade Oversize Thin Brick

[York]



Lorraine Full Range



French Provincial



Antique Ivory



Avignon



Old Savannah



Rockdale



Sahara



Barlow

CRAFTSMAN SERIES CONTINUED...



Cherry Lane



Belgium



Monticello



Rose Full Range



Victorian



Georgian



Virginia Blend



Brandywine



Shenandoah



Scotch Tradition



Trevanion



Royal Essex



Atlanta



Donehue

Emporium Thin Brick Series

Emporium's wirecut, smooth and smooth ironspot finishes offer unrivaled quality, sophistication and a contemporary, refined color palette. These bricks are a standout design feature in their own right, ably suiting today's mood or classical environments.

Catalog size: Modular Thin Brick

[Hanley]

EMPORIUM SERIES CONTINUED...



Aspen White Wirecut [Emporium+]



Cream White Wirecut



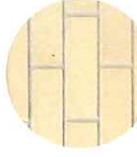
Golden Dawn Wirecut



Pearl River Wirecut



Aspen White Smooth [Emporium+]



Cream White Smooth



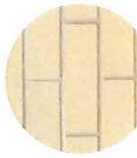
Golden Dawn Smooth



Pearl River Smooth



Black Pearl Wirecut [Emporium+]



Tawny Beige Wirecut



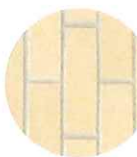
Dolomite Grey Wirecut



Mink Grey Wirecut



Black Pearl Smooth [Emporium+]



Tawny Beige Smooth



Dolomite Grey Smooth



Mink Grey Smooth



Sunset Wirecut



Sunset Smooth



Sunset Flashed Wirecut



Sunset Flashed Smooth

La Paloma Thin Brick Series

Reflecting the contemporary Spanish artists that inspired them, the bold and confident La Paloma range of icy white, blue and coal black bricks, express a deeper level of desire and creativity. With outstanding quality, these eye-catching through-the-body bricks transform buildings into works of art, in a spirit Dalí would be proud of.

Catalog size: Modular Thin Brick

[International]



Castellana



Azul



Romero

Designer Klaycoat® Thin Brick Series

The Designer Series of Klaycoat smooth finished bricks bring a touch of glamour to your project and make a design statement that will stand the test of time. Designed for both interior and exterior applications, the Burlesque range offers stylish elegance that's ideal for feature brickwork.

Catalog size: Modular Thin Brick

[Hanley]



Khaki Stone



Stone Grey



Urban Grey



Charcoal

Burlesque Glazed Thin Brick Series

Luster—Beautiful, fully glazed bricks that bring a touch of glamour to your project and make a design statement that will stand the rest of time. Designed for both interior and exterior applications, the Burlesque range offers stylish elegance that's ideal for feature brickwork.

Catalog size: Modular Thin Brick

[Hanley]



White



White with Speck



Cloud Grey



Cardinal Red



Bermuda Blue



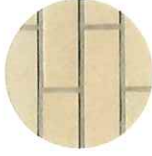
Black

Feldhaus Thin Brick Series

The German-made, Feldhaus thin brick is specially crafted to the most exacting tolerances and specifications. A century and a half of brickmaking expertise culminates in this versatile product's beautiful, wide-ranging colors, textures and clay bodies. This is a palette suited to the most ambitious design intentions, compatible with precast or any other installation system.

Catalog size: Modular Thin Brick

[International]



100 Classic Cream Smooth



757 Cream Waterstruck



764 Gray White Waterstruck



800 Classic Gray Smooth



779 Rustic Gray Waterstruck



387 Rustic Red Flashed



400 Classic Red Smooth



401 Classic Red Velour



313 Red Flashed Velour



714 Sundown Flashed



664 Deep Wine Handform



567 Coal Brindle Smooth



511 Onyx Smooth



737 Plowed Earth Waterstruck



777 Onyx Waterstruck



700 Anthracite Smooth

Element Thin Brick Series

Everyday life is interesting, varied and about home—feeling comfortable. This versatile range provides an old world look with unique papercut texture and slightly rounded edges.

Catalog size: Modular Thin Brick

[Caledonia]



Boyhill



Nob Hill



Old Detroit



Aberdeen



Cedar Lake



Caledonia Classic

Linen Thin Brick Series

Step out of the traditional reds and into the world of wonderful linen whites. This fresh, crisp range of white to grey toned bricks speak volumes with their absence of color and heavily textured faces.

Catalog size: Modular Thin Brick

[Caledonia]



Sandcastle



St. Cloud



Silverbrook



Garrison Grey

Black Hills Thin Brick Series

The endless red earth and cream landscape of the upper Midwest parts of the United States inspires our Black Hills Series. This series with its earthy tones is able to adapt to many different styles: depending on the architecture of your home it creates a modern or vintage feel.

Catalog size: Modular Thin Brick

Thin Brick | Colors



Washington



Mt. Rushmore



Lincoln



Jefferson



Roosevelt

Couture Thin Brick Series

This adaptable range provides a subtle rustic-look with a soft texture, multi-dimensional layered coloring and slightly rounded edges. The Couture Series products will provide a sense of warmth and comfort within your home.

Catalog size: Modular Thin Brick

[Caledonia]



Rosewood



Milwaukee



Flagstaff



Stratford



St. Windsor



Rustic Burgundy



Black Beauty

Industrial Rustic Thin Brick Series

Rustic, charring and full of character. Each brick in the Industrial Rustic Series appears to have stood the test of time and, like a fine wine, has only gotten better with age. The products in this range have a story to tell and add unsurmountable character to anywhere they are used.

Catalog size: Standard Thin Brick

[Mid-Atlantic]



Olde Dublin



Olde City



Olde England



Olde London

Settlers Thin Brick Series

The allure of the Settlers Series lies in the neutral tones and unique finishes. Upgrade any project with the versatility of this series, as these bricks complement a wide range of colors, building materials, and styles of architecture.

Catalog size: Modular Thin Brick

[Mid-Atlantic]



Provincial



Stonewall



Valley Forge

Colonial Thin Brick Series

True, tried and tested, the Colonial Molded range offers traditional colors and textures, making it the perfect brick for classic architecture. These bricks pair well with modern elements for a unique old, but new charm. Enjoy adding substance and quality to your project.

Catalog size: Modular Thin Brick

[Mid-Atlantic]



Danish



26-HB Flashed



53-DD



51-DDX

Cushwa® Calvert® Thin Brick Series

The Cushwa Calvert Molded range offers centuries proven texture and color combinations with unrivaled quality among each sand-finished brick. The standout design features of these products are their ability to stand out in today's modern or classical environments.

Catalog size: Modular Thin Brick

[Mid-Atlantic]



Rose Full Range



Cambridge

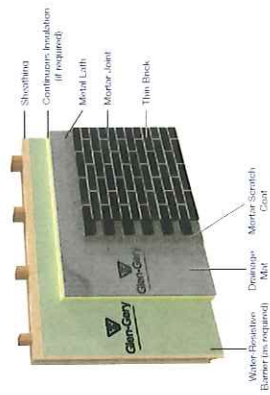


Shensadooh

Build + admire.

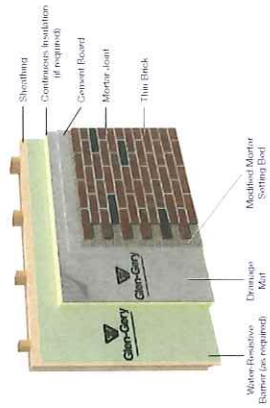
One of the many beauties of thin brick is the various methods available when it comes to installation. Whether its interior or exterior, thin brick lends itself to the installer.

THICK SET – EXTERIOR APPLICATION



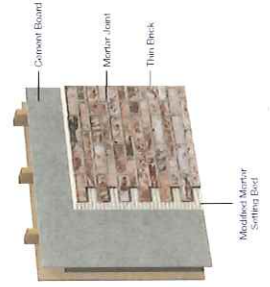
This traditional method of installation is for residential and small commercial applications 1-2 stories. Mortar and metal lath support the thin brick veneer.

THIN SET – EXTERIOR APPLICATION



This method offers enhanced performance for thinner veneers and commercial projects greater than 10 feet in height.

THIN SET – INTERIOR APPLICATION ONLY



This method is typically used by an installation professional for larger wall areas.

ADHESIVE – INTERIOR APPLICATION ONLY



For capable do-it-yourselfers, projects with Glen-Gery thin brick can be used for interior walls, kitchens, fireplaces and other distinctive design elements. Installers can use adhesive applications with either masonry/concrete backing or wood/steel stud framing.



Performance verified.

ADVANCED THIN MASONRY TECHNOLOGY.



Durable masonry support.

The Thin Tech masonry support system extends and magnifies the usefulness of thin brick, with high-grade galvanized steel support and thermal-set coating that deliver superior strength and durability.



Stratford Thin Brick
Thin Tech-Elite

Thin Tech®

+

Thin Tech advantages

Allows mortar to surround the support tie creating a positive mechanical lock between the brick, mortar and panel.

The space created by the channels of Thin Tech Elite panel can eliminate the need for a second layer of weather-resistive barrier. Alternately, a drainage mat can be used with Thin Tech Classic panels.

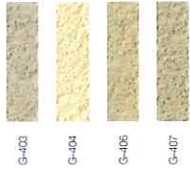
No relief angles or foundations needed for support as panels are attached with screw fasteners provided by Glen-Gery.

Thin Tech fasteners are available in lengths to easily accommodate installations with up to 2" of rigid foam insulation.

For more information visit www.glen-gery.com/thin-tech

Finishing strong.

Choosing the right mortar color can make all the difference when building your vision. Whether you're going for contrast or a more even-toned aesthetic, our range of mortar colors can help bring your ideal look to life. See the full suite of mortar colors at glengary.com.



+

See the dramatic effects of our mortar colors, each installed with *Reverton Handmade Brick*.



G-204



G-404



G-302



G-501



Pebbled Concrete & Limestone

+

Add a tasteful touch with an unexpected mortar technique.



Standard Concave



Over Mortar



Grabwire

Aesthetics with purpose.

Combining construction functionality with the final degree of visual finish, precisely crafted shapes are available to help perfect any installation featuring Glen-Gery thin brick.



Edge caps



Corners



See it before you live it.

With the Picture Perfect design tool from Glen-Gery, you can visualize your project with any Glen-Gery building product, including thin brick. Try one look or try them all, and see what fits for you.

www.glen-gery.com/picture-perfect



Cedar Lake Thin Brick, Glen-Gery Limestone Collection, Staunton Chimney Ridge

You + Your Style

It all comes together at glen-gery.com



Discover the possibilities at glengery.com

Cover Image: Silverbrook Thin Brick

A BRAND OF
BRICKWORKS

Due to printing limitations, color and texture may vary from actual product. Final selection should always be based on an actual product sample. For more information, contact your Glen-Gery representative. © 2021 Glen-Gery Corporation • 2/21

Not all thin bricks are recommended for use in interior paving applications. Please consult a masonry professional to ensure proper design/installation.

RETRACTABLE SHADING SYSTEMS

ECLIPSE | BRAID & VALANCE

STYLE OPTIONS



eclipse
SHADING SYSTEMS®

ECLIPSEAWNING.COM

VALANCE STYLE OPTIONS

The valance is located on the front of the awning which provides additional solar protection. The valance slides into a track on the front bar and typically measures 8 inches long. Depending on the model you select, you can choose from different valance cut styles.



STRAIGHT - If no braid is selected it's considered, "STRAIGHT HEM ONLY"



WAVE



CLASSIC



EURO

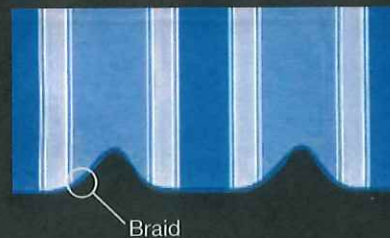


GREEK

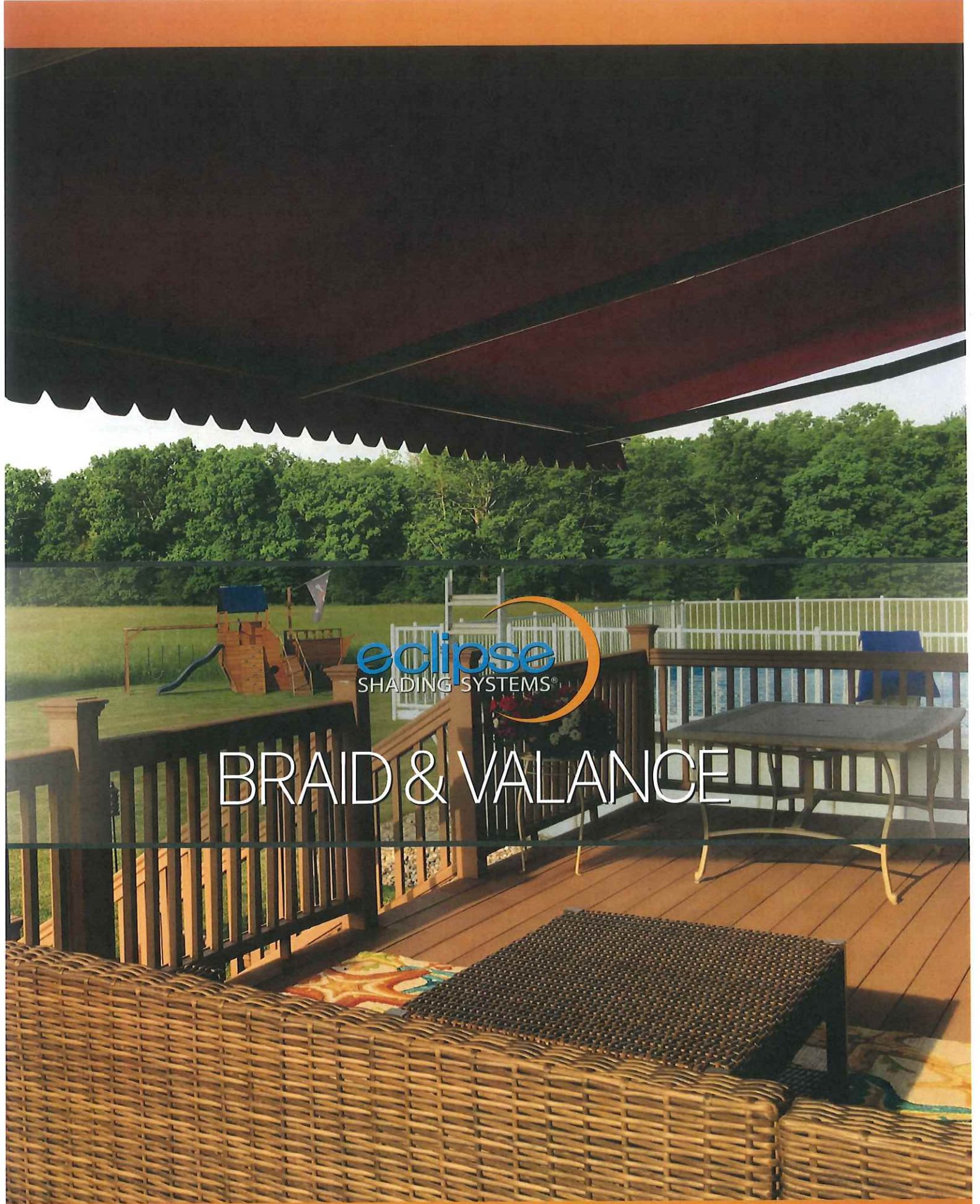
BRAID COLOR OPTIONS



The braid is the finished edge along the bottom of the valance and is constructed of 100% acrylic fibers. Our seamstress will select the best braid color match based on the fabric you choose or you can choose from our 18 color options. The numbers listed below each color are the exact color match to the Sunbrella fabric color.



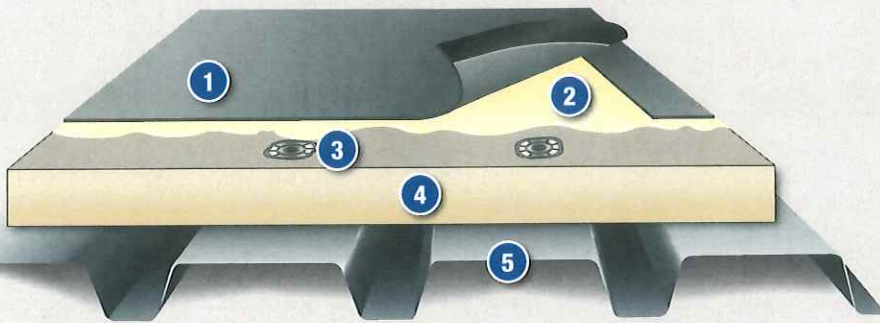
White #4604		Terra Cotta #4622	
Heather Beige #4672		Red #4603	
Linen #4633		Burgundy #4631	
Toast #4628		Sky Blue #4624	
Taupe #4648		Pacific Blue #4601	
Cocoa #4676		Sapphire #4641	
Brown #4621		Captain Navy #4646	
Fern #4671		Gray #4630	
Forest #4637		Black #4608	



BRAID & VALANCE

Sure-Seal[®] EPDM[®]

Fully-Adhered Roofing Systems



- 1 Sure-Seal Membrane with Factory-Applied Tape (FAT™)
- 2 Carlisle Bonding Adhesive
- 3 Carlisle Fasteners and Plates
- 4 Acceptable Insulation
- 5 Approved Roof Deck

Sure-Seal EPDM Membranes for fully adhered roofing systems are available in the following:

Color	Black
Thicknesses (mils)	45, 60 and 90
Standard Widths	10' – 30'
Standard Lengths	50' – 100'

System Features & Benefits:

- » Over 50 years of proven performance
- » In colder climates, dark-colored EPDM reduces heating costs, which are generally 3–5 times greater than cooling costs
- » Industry leading UV resistance of 41,580 kJ/m²
- » Full thickness of weathering material, no internal scrim
- » 465% elongation results in superior hail damage resistance
- » Lowest global warming potential, acid rain and smog impact according to EPA's TRACI model

Existing or New Deck Type	New Construction						Re-roofing		
	Steel	Plywood or OSB	Lt. Wt. Concrete	Structural Concrete	Wood Planks	Gypsum & Fibrous Cement	Smooth Surface BUR	Gravel Surfaced BUR	Existing Single-Ply
Insulation Required	Yes	No	*Refer to Specs	No	Yes	Yes	No	Yes	Yes
Recommended Insulations	Carlisle Polyiso, OSB or SecurShield™ HD Cover Board over Polystyrene						← Refer to New Construction		
Insulation Attached By	FAST™ Adhesive (non-penetrating) or Carlisle Fasteners and Plates						← Refer to New Construction		
Membrane Attached By	Carlisle-Approved Bonding Adhesive						← Refer to New Construction		

FOR TEAR OFF OPTIONS REFER TO NEW CONSTRUCTION ABOVE.

For current code approvals, warranties and specifications and details, visit Carlisle's web site or contact Project Review.

* Refer to Carlisle's Adhered Design Criteria portion of the current specification for requirements.

Sure-Seal[®] EPDM

Fully-Adhered Roofing Systems

Installation

Carlisle's fully adhered roofing system utilizes 45-, 60- and 90-mil Sure-Seal non-reinforced or 45-, 60- and 75-mil Sure-Tough[™] reinforced membranes.

Insulation is either mechanically fastened to the roof deck every two square feet, adhered with FAST Adhesive or other Carlisle approved insulation adhesive. Membrane is adhered to the insulation with Carlisle Approved Bonding Adhesive. Adjoining sheets of EPDM are spliced together a minimum of 3" using Carlisle's SecurTAPE[™] or FAT[™] seam technology.

The above information represents a typical Carlisle fully adhered roofing system. Refer to Carlisle's published specifications and details for more complete information.

Membrane and System Strengths

- » Carlisle manufactures all major components of the roof system
- » Dimensionally stable in both hot and cold climates
- » No slope restrictions
- » Lightweight assembly for a variety of decks
- » Reduces carbon footprint by lowering heating costs
- » Reduces safety hazard from snow and ice accumulation
- » Reduces hazardous rooftop conditions from frost, dew, or ice that are difficult to see on white membrane
- » Reduces potential condensation problems that can erode system performance
- » FAT Seam Technology and Pressure-Sensitive Flashing accessories enhance workmanship quality
- » 45-mil, 60-mil and 90-mil Sure-Seal membranes available for 15-, 25- and 30-year system warranties
- » Available in 10', 16½', 20', 25' and 30' widths. These widths of non-reinforced Sure-Seal membrane reduce splices between sheets
- » Using Sure-Tough reinforced membrane increases puncture resistance and tolerates heavy foot traffic
- » Carlisle's Fully Adhered Roof System offers design flexibility, addresses unconventional building configurations, and conforms to steeply sloped roof designs
- » Zero (no growth) rating for fungal growth

System Codes

- » UL Class A and B ratings are available over most deck types
- » FM uplift ratings up to 1-120 are available

For code specifics, refer to Carlisle's Code Approval Guide.

Quality Assurance

Carlisle Authorized Applicators have been trained to install fully adhered roofing systems.

Inspection

Upon installation completion, and prior to the issuance of a membrane system warranty, an inspection will be conducted by a Carlisle Technical Representative.

Warranty

Consult your Authorized Applicator or Carlisle Manufacturer's Representative/Distributor for associated warranty charges.

This system properly installed and inspected on a commercial project may receive:

- » A 10-, 15-, 20-, 25- or 30-year (75-mil or 90-mil required) Golden Seal[™] Total System Warranty may be requested when all materials used for the roofing installation are manufactured or marketed by Carlisle. A maximum peak gust wind speed coverage of 55 miles per hour is standard. Additional coverage up to 30 years and 120 mph is available.
- » A 1" hail warranty is available with 60-mil EPDM and a 2" hail warranty is available with 75-mil or 90-mil EPDM
- » A 40-year non-prorated ELITE membrane material warranty is available with 90-mil black EPDM
- » Warranty for systems incorporating Carlisle's Sure-Tough membrane include coverage for damage caused by accidental punctures

For more specifics or for international warranty programs, contact Carlisle.

